



**SafetyLink®**

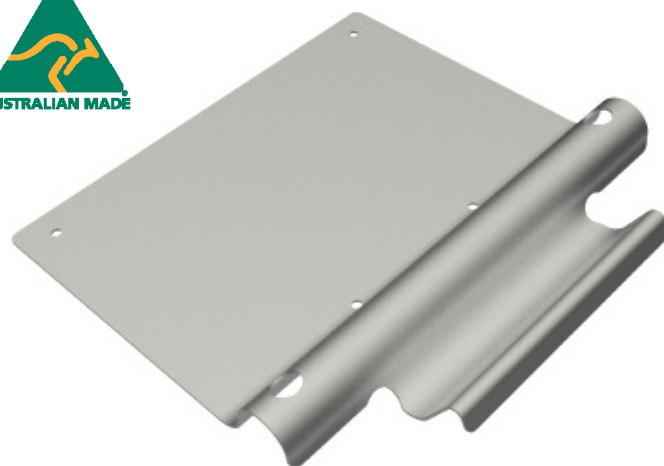
*Innovative  
Fall Protection*



## Fixed Ladder**Link**™

*Ladder Stabiliser*

*SafetyLink's patented Fixed LadderLink is a permanent bracket designed to stabilise your ladder.*



**SafetyLink®**  
*Innovative  
Fall Protection*

**SafetyLink Pty Ltd 1300 789 545**  
+61 2 4964 1068 [info@safetylink.com](mailto:info@safetylink.com)

***'Innovative  
Fall Protection'***

For further information and to order our products visit our website.

[www.safetylink.com](http://www.safetylink.com)





**SafetyLink®**

Innovative  
Fall Protection



Ladder**Link** is the essential entry point system to any height safety system. Made in Australia from marine grade aluminium the Ladder**Link** is designed to support a ladder, stopping sideways movement and therefore holding the ladder in place safely. In addition the Ladder**Link** has securing points to tie off the ladder providing a safe access point.

- 🔗 Made from marine grade aluminium.
- 🔗 Quick and easy installation.
- 🔗 Essential entry point system to stabilise your ladder.
- 🔗 Australian Made.

## Benefits of choosing Safety**Link**:

Safety**Link's** Fixed Ladder**Link** has been manufactured from marine grade aluminium, this metal choice not only ensures a durable light weight product for installation, it also has the added advantage of being a compatible metal, with the Ladder**Link's** large surface area this is certainly an added advantage.

Safety**Link** have finished this product off with a protective membrane in the form of a powder coat finish, this ensures your product is ready for any additional colouring you would like to apply.

*Safety**Link's** Fixed Ladder**Link** is a permanent bracket designed to stabilise your ladder. The Fixed Ladder**Link** has securing points to tie off the ladder providing a safe access point, eliminating sideways movement. A quality Australian Made Product.*

Safety**Link** will provide you with the following:

- 🔗 All products tested and manufactured to Australian and New Zealand Standards.
- 🔗 All distributors and installers are trained to use Safety**Link** products.
- 🔗 Supply installation guides, testing results and product sheets.
- 🔗 Layout Design Service providing compliant roof safety systems.
- 🔗 Supply a large range of roof anchors that protect you from the ground up, allowing complete access to your roof.
- 🔗 Installers are qualified to do yearly inspections on your anchors as per Australian and New Zealand Standards.



**SafetyLink®**  
Innovative  
Fall Protection

**SafetyLink Pty Ltd 1300 789 545**

+61 2 4964 1068 [info@safetylink.com](mailto:info@safetylink.com)



FS 707792

For further information and to order our products visit our website.

**[www.safetylink.com](http://www.safetylink.com)**